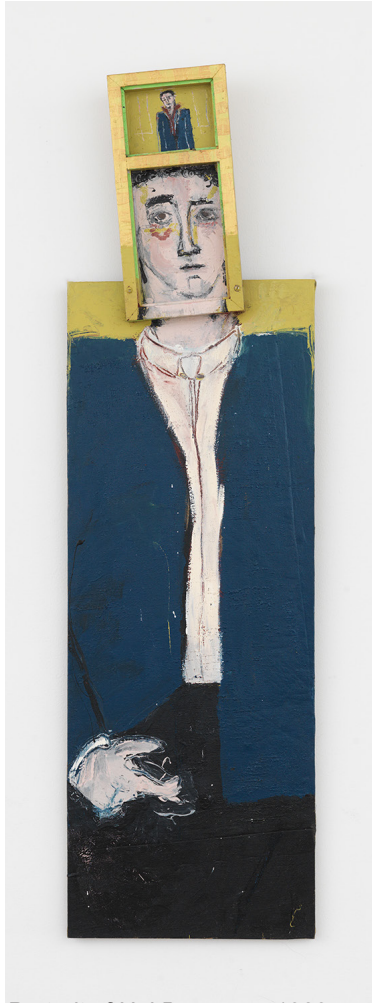


JUDY GLANTZMAN



Portrait of Hal Bromm, c. 1983

Judy Glantzman was born in Long Island, NY in 1956 and graduated from the Rhode Island School of Design in 1978. She began exhibiting in the early 1980's in the East Village art scene, at Civilian Warfare and Gracie Mansion. She followed with shows at Blum Helman and Hirschl & Adler Modern in the 1990's and at Betty Cunningham Gallery for the past eight years. She had a 30 year retrospective at Dactyl Foundation in spring 2009. Glantzman was a Painting instructor at the Rhode Island School of Design and part of the drawing faculty at the New York Studio School.

The artist's work can be seen in numerous public collections, including the Whitney Art Museum, New York, NY; Grey Art Gallery, New York, NY; the Phoenix Art Museum, Phoenix, AZ; The Progressive Collection, Cleveland, OH; and the Tampa Museum of Art, Tampa, FL. She has been the recipient of numerous awards and grants, most notably the John Simon Guggenheim Memorial Fellowship, 2001; the Anonymous Was a Woman Foundation Grant, 1997; the New York Foundation for the Arts Grant, 1994; and the Pollock Krasner Foundation Grant, 1992. Glantzman lives and works in New York, NY.